

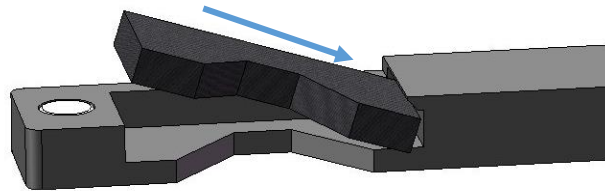


## Way Wiper Kit For the Sieg Mini Lathe

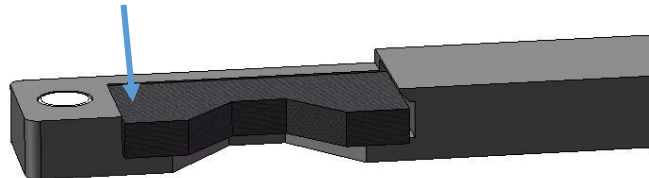
8/20/15

### Installation Instructions:

1. Place a new felt wiper pad into each pad holder.
  - a. Place the pad under the hold down ledge.



- b. Push the other end into place.



2. If desired, soak the felt pads in oil (or your way lubricant of choice) to lubricate the ways as the carriage moves.
3. Use a chip brush to clean the ways of any swarf prior to installation.
4. Place a way wiper onto the leading face and the trailing face of the carriage (the wipers are side specific and will only fit one way).
5. Push down on the wiper on the V side of the bed to center the wiper on the ways.
6. Push down on the wiper on the flat side of the bed to make contact with the ways.
7. Over time, swarf will get caught in the felt pads. Simply pop off the way wipers and brush the pads clean with a chip brush. It is recommended to do this every 5 or so uses.

For more info, or to order more felt pads, please visit our website:

[www.PhenomEngineering.com](http://www.PhenomEngineering.com)